



# FLAT DISPLAY TECHNOLOGY

7" Chassis Monitor

Model Number: LCM070W~~xx~~-000R



This product is RoHS compliant

**SPEC No.: SAS-0810004**

**Version: 0.0**

**Issue Date: October 27 2008**



## 1. Introduction:

### 1.1 About the Product

The LCM070W~~xx~~-000R 7" Chassis Monitor series are rugged, high performance Industrial LCD Monitors, designed for commercial and industrial applications, such as kiosks, arcade games, ATM Machines, aviation simulators, military, medical, marine, security, industrial equipment, and instrumentation equipment. This product can provide high brightness and contrast to achieve better viewing effect.

### 1.2 Features

- 7 inch WVGA Active Matrix Color TFT LCD Monitor
- High Contrast 400:1 Typical
- Recommend resolution:800x480(WVGA)
- OSD controls: Allow on-screen adjustments of Brightness, Contrast, RGB Auto Color Balance, H-Position, V-position
- Multi system Video Input
- Signal loss backlight will be off / signal feed again backlight will be on
- Quick and easy integrations for Client solutions
- Universal AC Power input and auto detection video system.
- PMMA ( Poly Methyl MethAcrylate ) protection (Hard Coating + Anti Glare) (option)
- Touch screen (option)
- Sunlight readable (option)

## 2. Contents

Contents Index	Page
<b>1. Introduction</b> .....	1
1.1 About the product	1
1.2 Features	1
<b>2. Contents</b> .....	2
<b>3. Specifications</b> .....	3
<b>4. Ordering Information</b> .....	4
<b>5. VGA Input Format</b> .....	4
<b>6. Mechanical Drawing</b> .....	5-7
6.1 LCM070W03-000R	5
6.2 LCM070W5U-000R	6
6.3 LCM070W5R-000R	7
<b>7. Packing List</b> .....	8
<b>8. Installing the Monitor</b> .....	9
8.1 Power Cable Connection	9
8.2 VGA Signal Cable Connection	9
8.3 Video / S-Video Cable Connection	9
8.4 Switch On The Power	9
<b>9. OSD Control</b> .....	10-12
9.1 Menu Operation	10-11
9.2 Operations	12
<b>10. Trouble Shooting</b> .....	13

### 3. Specifications

Parameter	Specifications	Unit	Remark
Model Name	LCM070W <del>xx</del> -000R		
Screen Size	7" (diagonal)	inch	
Display Format	800 x (R.G.B) x 480	dot	
Display Color	262,144 colors		
TFT-LCD Active Area	152.4(H) x 91.44(V)	mm	
Pixel Pitch	0.1905(H) x 0.1905(V)	mm	
Contrast Ratio	400:1(Typ.)		
Brightness	400(Typ.)	Cd/m <sup>2</sup>	
Viewing Angle	-60 ~ +60(H); -55 ~ +40(V)(Typ.)	deg	
Outline Dimension	172.6 (W) x 110.0 (H) x 40.0 (D)	mm	
Input/Output Interface	D-Sub 15 pin female for VGA / USB for Touch Screen Driver USB or RS-232 (DB9 Female) for Touch Screen Driver (Option)		
Power Source	100-240V <sub>AC</sub> 50-60Hz, Universal / +12V <sub>DC</sub> @ 3A		
Power Consumption	< 5.3W		
Touch Screen Controller	5 wire Resistive Driver USB/ RS232 (Option)		
Operating Temperature	-10 ~ +60	°C	
Storage Temperature	-20 ~ +70	°C	
Lamp Life Time	30000(Min.)	hr	

FLAT DISPLAY TECHNOLOGY

■ LCM070W~~xx~~-000R V0.0 

## 4. Ordering Information

Parameter	LCM070W03-000R	LCM070W5U-000R	LCM070W5R-000R	Unit
CVBS	1	1	1	
S-Video	1	1	1	
VGA	WVGA (800x480)	WVGA (800x480)	WVGA (800x480)	
Touch Panel Type	-	5W Resistive	5W Resistive	
Touch Screen Interface	-	USB	RS232	
PMMA	⊙	-	-	
Weight (Include Accessory)	2.0	2.1	2.1	Kg

Note: Weight  $\pm 10\%$

## 5. VGA Input Format

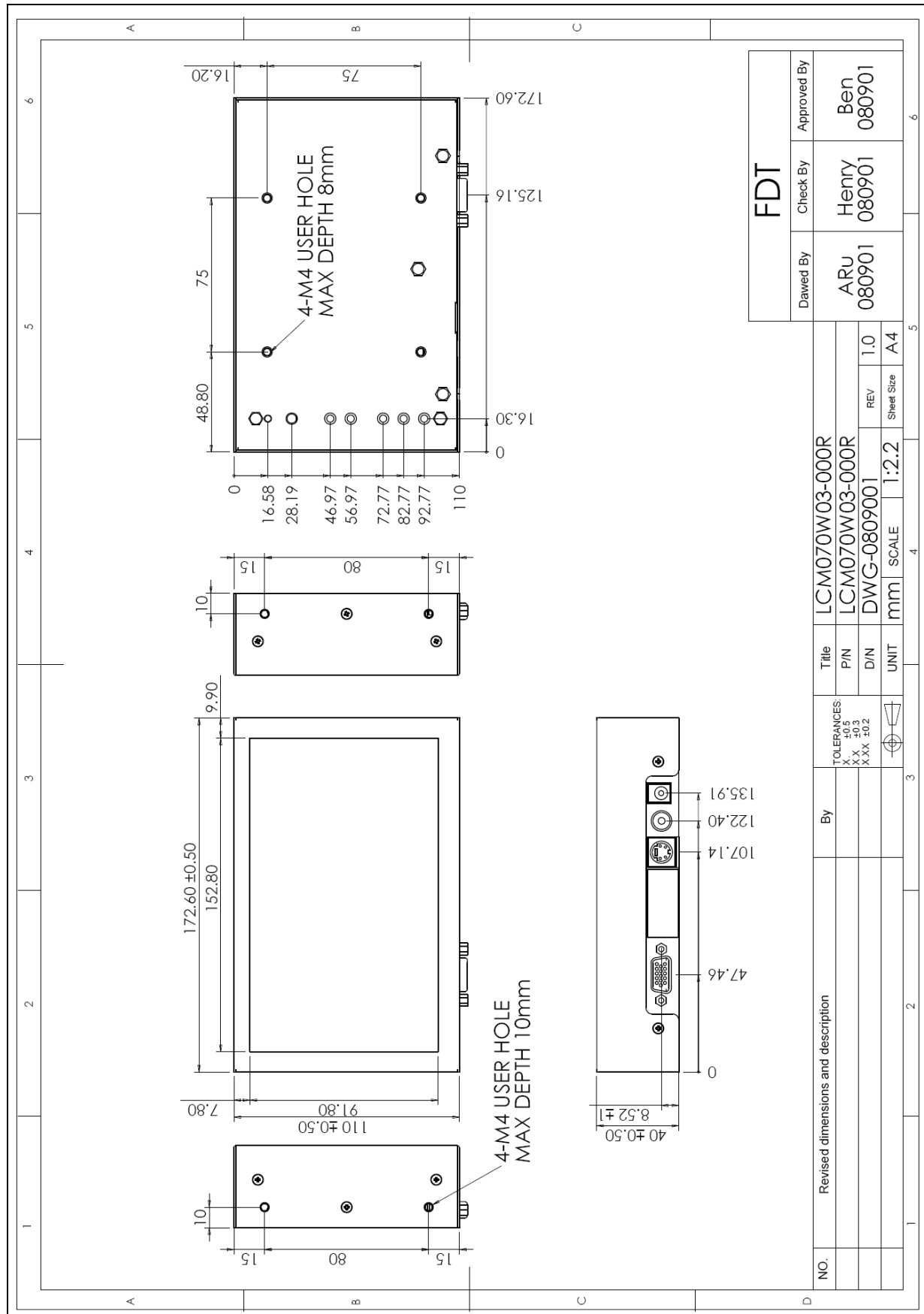
	Mode	Family	Resolution	H-Freq. (KHz)		V-Freq. (KHz)	
1	Mode 1	PC	720x350	31.47	(+)	70.1	(-)
2	Mode 2	PC	720x400	31.47	(-)	70.1	(+)
3	Mode 3	PC	640x480	31.47	(-)	59.9	(-)
4	Mode 4	VESA	640x480	37.86	(-)	72.8	(-)
5	Mode 5	VESA	640x480	37.50	(-)	75.0	(-)
6	Mode 6	VESA	800x600	37.88	(+)	60.3	(+)
7	Mode 7	VESA	800x600	48.08	(+)	72.2	(+)
8	Mode 8	VESA	800x600	46.88	(+)	75.0	(+)
9	Mode 9	VESA	1024x768	48.36	(-)	60.0	(-)
10	Mode 10	VESA	1024x768	56.48	(-)	70.1	(-)
11	Mode 11	VESA	1024x768	60.02	(+)	75.0	(+)
12	Mode 12	VESA	1280x1024	63.98	(+)	60.0	(+)

FLAT DISPLAY TECHNOLOGY

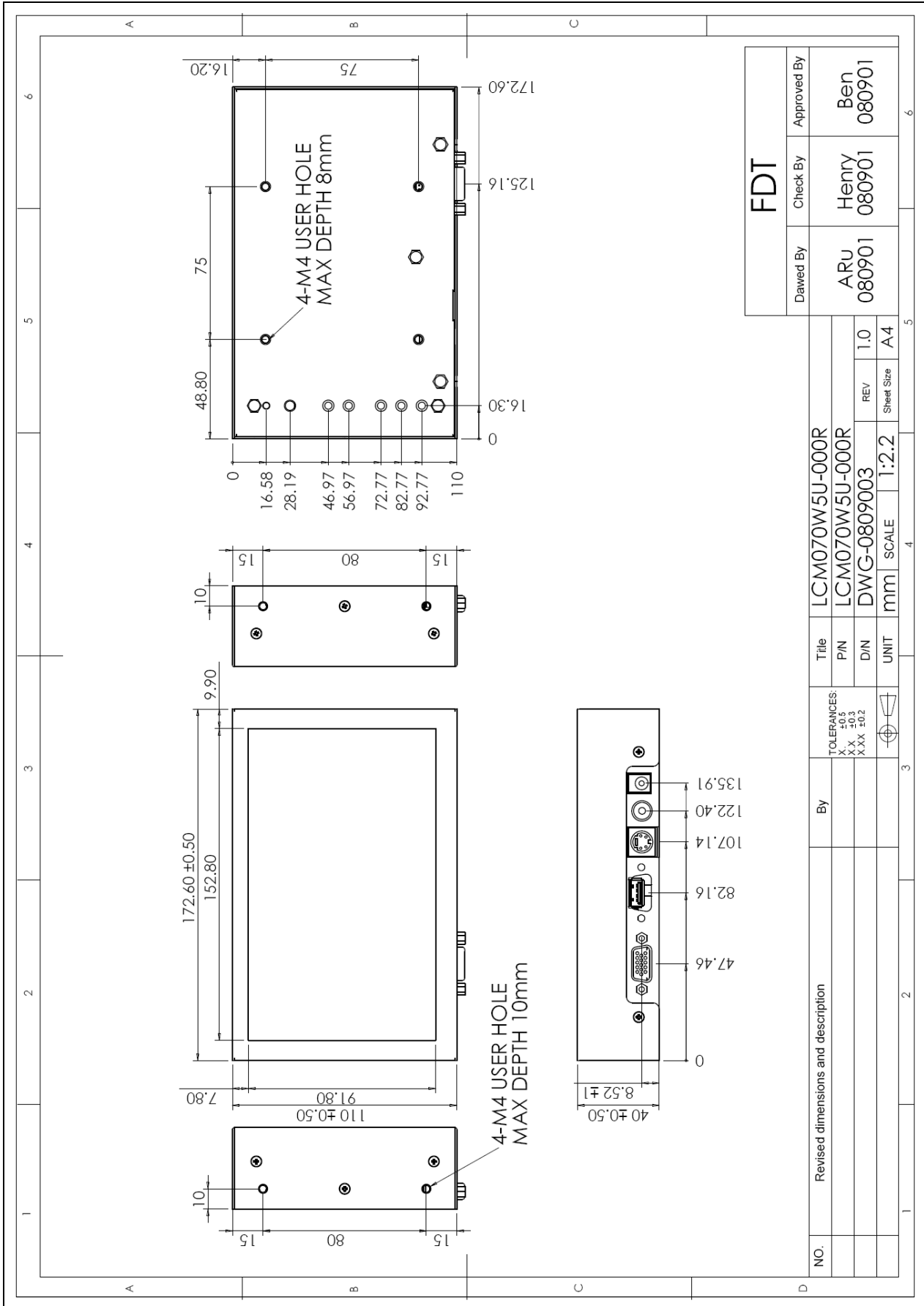
■ LCM070Wxx-000R V0.0 

# 6. Mechanical Drawing

## 6.1 LCM070W03-000R



6.2 LCM070W5U-000R



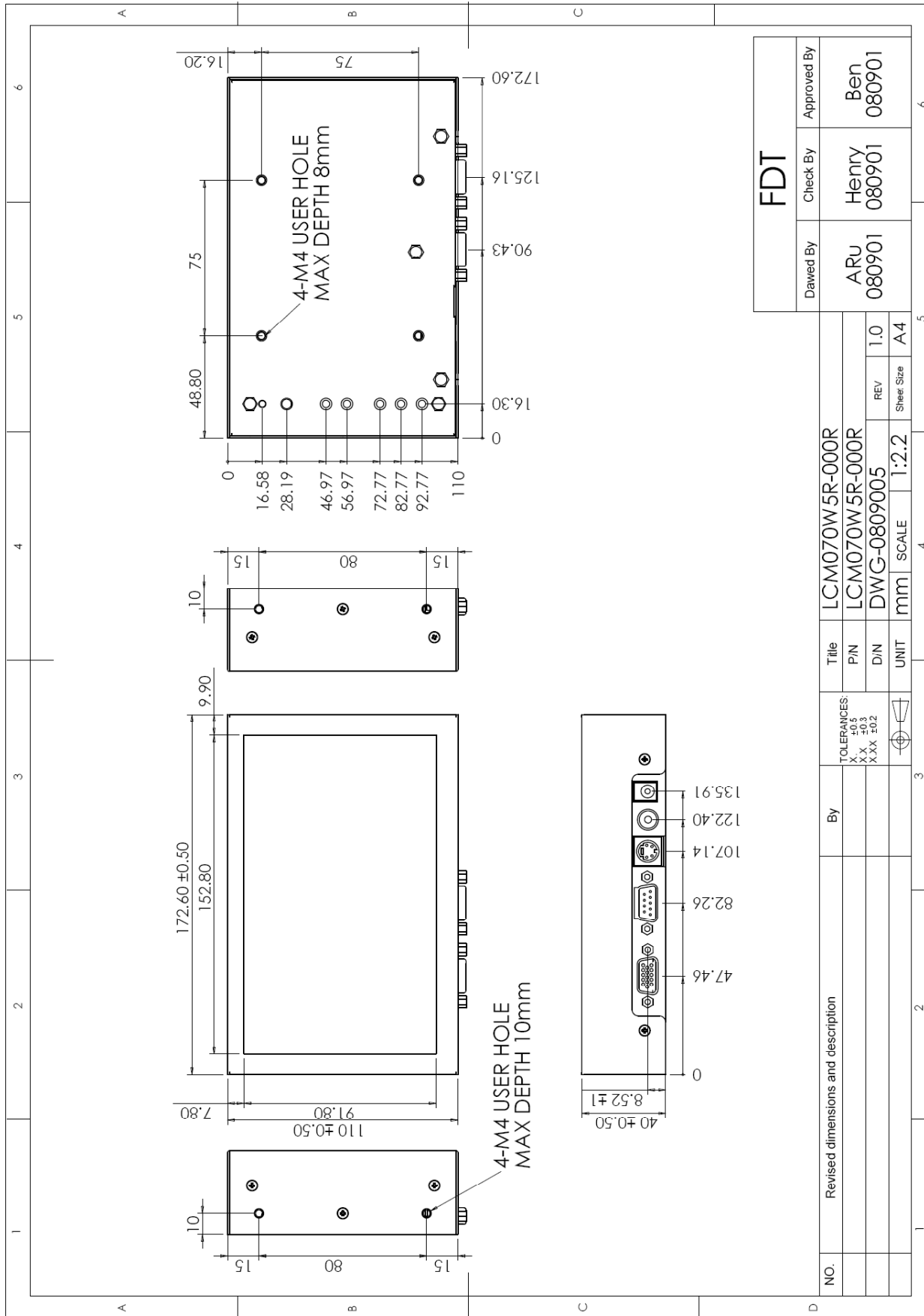
<b>FDT</b>		
Dawed By	Check By	Approved By
ARU 080901	Henry 080901	Ben 080901

NO.	Revised dimensions and description		By	Title	
				LCM070W5U-000R	PIN
				LCM070W5U-000R	DIN
				DWG-0809003	REV
				mm	1.0
				SCALE	Sheet Size
				1:2.2	A4

FLAT DISPLAY TECHNOLOGY

■ LCM070Wxx-000R V0.0

**6.3 LCM070W5R-000R**



<b>FDT</b>		
Dawed By	Check By	Approved By
ARu 080901	Henry 080901	Ben 080901

NO.	Revised dimensions and description	By	TOLERANCES: XX ±0.3 XXX ±0.2	Title	LCM070W5R-000R	
				PIN	LCM070W5R-000R	
				DIN	DWG-0809005	
				UNIT	mm	
			SCALE	1:2.2	REV	1.0
					Sheet Size	A4

FLAT DISPLAY TECHNOLOGY

■ LCM070Wxx-000R V0.0

## 7. Packing List

Before you begin installing the Chassis Monitor, please make sure that the following materials have been shipped:



A. AC to DC Adapter (100-240V<sub>AC</sub> 50-60Hz to +12V<sub>DC</sub> @ 3A)

B. Power Cord

C. Video Cable

D. S-Video Cable

E. VGA Cable

F. USB Cable (LCM070W5U Only)

G. RS-232 Cable (LCM070W 5R Only)

H. Touch Screen Driver CD Disk (LCM070W5U & LCM070W5R Only) / User Manual

If any of these items are missing or damaged, contact your distributor or sales representative immediately.



## 8. Installing the Monitor

### 8.1 Power cable connection:

Connect the power cord to the AC outlet, and connect the power to the monitor through the AC/DC adapter.

### 8.2 VGA signal cable connection:

Plug one end of the 15-pin signal cable to the VGA connector at the rear of the PC system and the other end to the Chassis monitor.

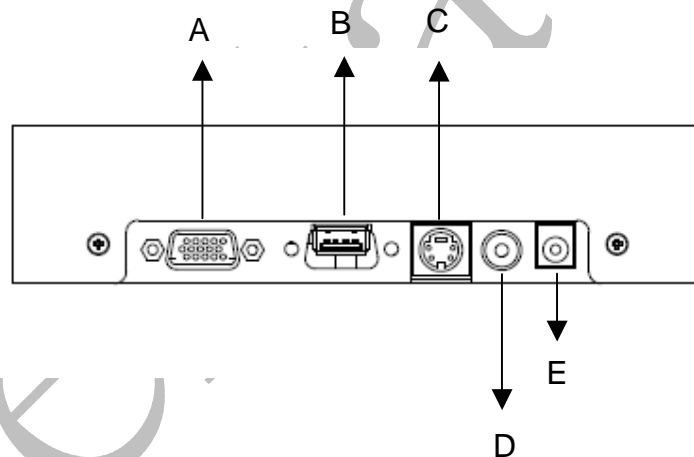
Secure the connectors with the screws on the cable connector at both ends.

### 8.3 Video / S-Video Cable connection:

If required, connect Video / S-Video Cable from the Open Frame Monitor to the DVD or CCD Camera.

### 8.4 Switch on the power:

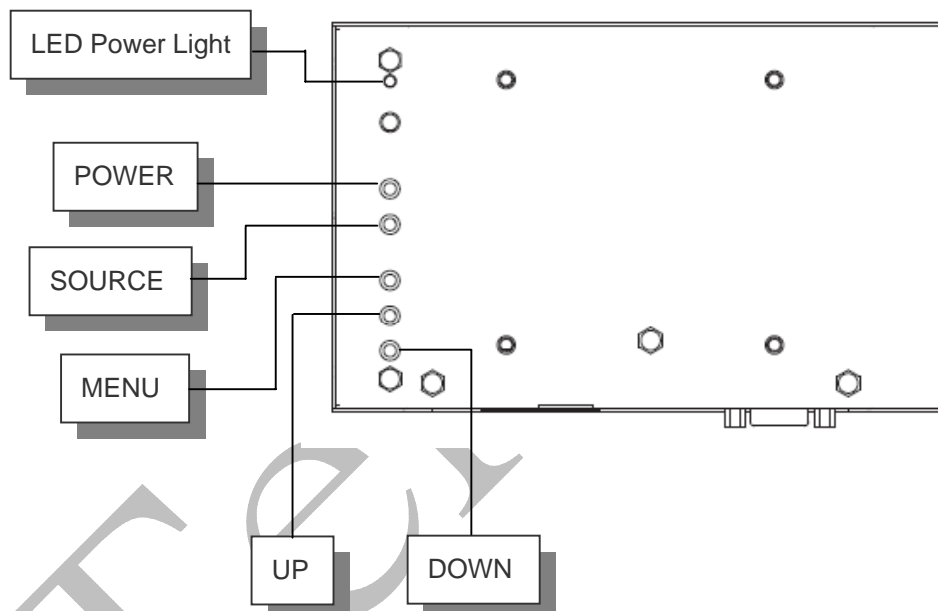
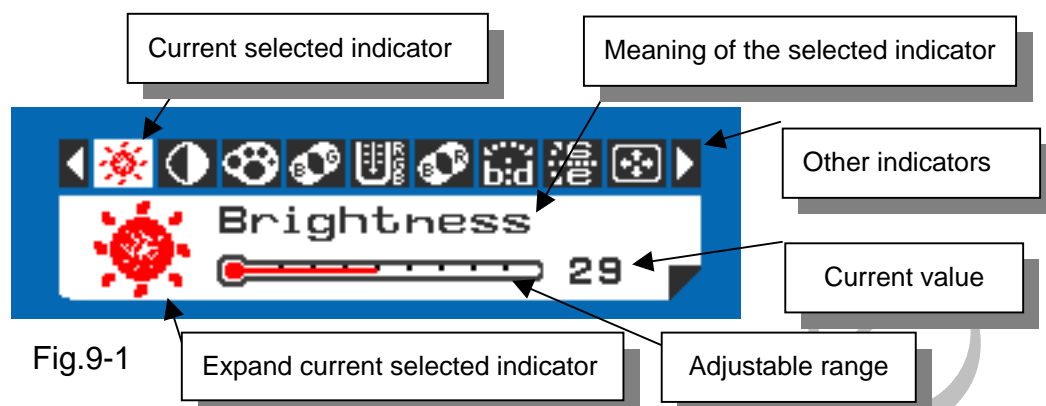
Switch on the power switch on the rear cover of the Chassis Monitor.



- A. VGA D-sub 15 (Female)
- B. Touch USB or RS232 Interface
- C. S-Video (Y/C Video) In
- D. Video (CVBS) In
- E. DC-In (+12V<sub>DC</sub> The DC jack core is positive)

## 9. Key Function by OSD

### 9.1 Menu Operation



#### Operations of key board :

1. To navigate the menu, press [MENU]. (Fig.9-1)
2. The indicator lighting up in white color is the selected adjustment item.
3. To Next Item of the menu, press [MENU] again.
4. The operations below are only available when "Menu" is started.
5. Press [UP] / [DOWN] to adjust the value of the selected item.

Overview of the menu :

Indicator	Meaning	Adjustable range	For	Remark
	Brightness	0 ~ 64	AV / S-Video / VGA	Adjust-Bar
	Contrast	0 ~ 64	AV / S-Video / VGA	Adjust-Bar
	Color	0 ~ 64	AV / S-Video	Adjust-Bar
	Tint	0 ~ 32	AV / S-Video	Adjust-Bar
	Sharpness	0 ~ 16	AV / S-Video	Adjust-Bar
	Color Tone	Normal / Warm / Cool	AV / S-Video / VGA	
	Mirror	OFF / ON	AV / S-Video / VGA	
	Flip	OFF / ON	AV / S-Video / VGA	
	H-Position	-10 ~ +10	VGA	Balance-Bar
	V-Position	-10 ~ +10	VGA	Balance-Bar
	Auto		VGA	
	Scale	Full / 4:3	AV / S-Video / VGA	
	Scan	Over Scan / Under Scan	AV / S-Video	
	Display Mode	800x480 / 800x600	VGA	Only for SVGA/WVGA mode
	Information		AV / S-Video / VGA	Fig.9-2
	Factory Set		AV / S-Video / VGA	
	Exit		AV / S-Video / VGA	

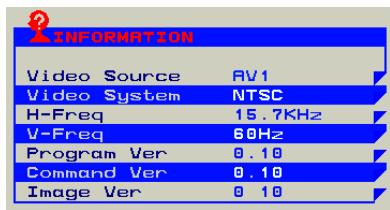


Fig.9-2

FLAT DISPLAY TECHNOLOGY  
 ■ LCM070Wxx-000R V0.0

**9.2 Operations**

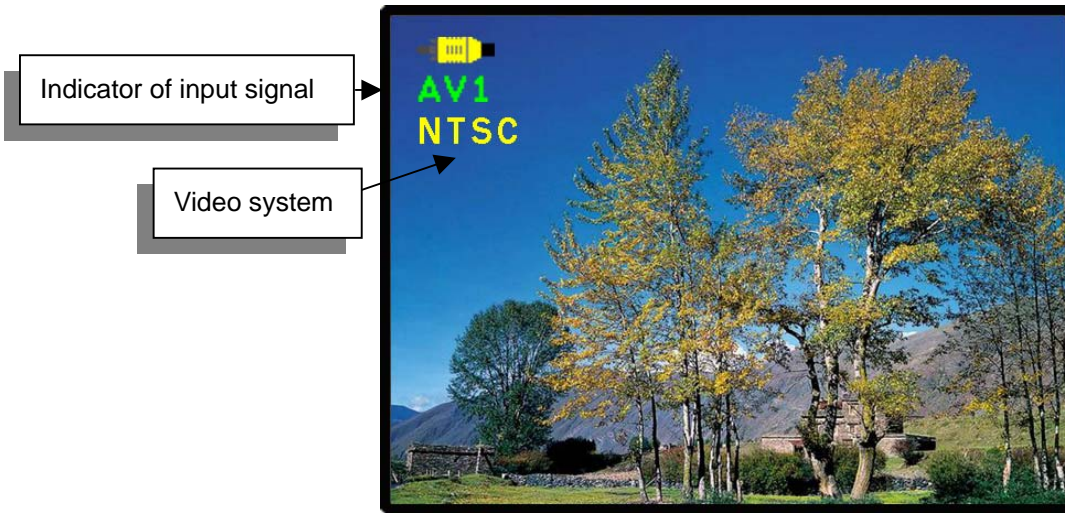



Fig.9-3

[Power] : Monitor power on / off

[Source] : Input signal switch

**Overview of input signals :**

Indicator	Input signal	Interface	Video system
	VGA	Analog RGB	800x480_60 / 800x600_60 / 1024x768_60 / 1280x1024_60

## 10. Trouble Shooting

If experiencing trouble with the monitor, or it fails to operate correctly, please refer to the following instructions before calling for repairs.

Condition	Check Point
1. The picture does not appear	<ul style="list-style-type: none"><li>● Check to see that all the I/O and power cables is firmly seated in the socket.</li><li>● Check the Power LED is Lighting When the monitor was turned ON.</li><li>● Check if the brightness control is at the appropriate position, not at the minimum.</li></ul>
2. The screen is not synchronized	<ul style="list-style-type: none"><li>● Check if the I/O signal cable is firmly seated in the socket.</li><li>● Check if the output level matches the input level.</li><li>● Make sure the signal timings of the computer system are within the specification of the monitor.</li></ul>
3. The position of the screen is not in the center	<ul style="list-style-type: none"><li>● Adjust the H-position, and V-position, or perform the auto adjustment Or Factory Set.</li></ul>
4. The screen is too bright (too dark).	<ul style="list-style-type: none"><li>● Check if the brightness or contrast control is at the appropriate position, not at the Maximum (Minimum).</li></ul>
5. The Screen is shaking or waving	<ul style="list-style-type: none"><li>● Press the Auto adjustment control to adjust. Moving all objects which emit a magnetic field such as motor or transformer, away from the monitor. Check if the specific voltage is applied.</li><li>● Check if the signal timing of the computer system is within the specification of monitor.</li></ul>

If you are unable to correct the fault by using this chart, stop using your monitor and contact us.